



IDPH
ILLINOIS DEPARTMENT OF PUBLIC HEALTH

Epidemiologic Trends in HIV in Illinois

Prepared by Cheryl Ward and Presented by Fangchao Ma

for the June 20, 2018

Getting to Zero Kick-Off Meeting

State Ranking of HIV Diagnoses Among Adults and Adolescents, 2015

Estimated Numbers of HIV Diagnoses	2015
1. Florida	4,849 (12.3%)
2. California	4,720 (12.0%)
3. Texas	4,476 (11.4%)
4. New York	3,123 (7.9%)
5. Georgia	2,381 (6.0%)
6. Illinois	1,472 (3.7%)
7. Maryland	1,347 (3.4%)
8. North Carolina	1,335 (3.4%)
9. New Jersey	1,190 (3.0%)
10. Pennsylvania	1,170 (3.0%)

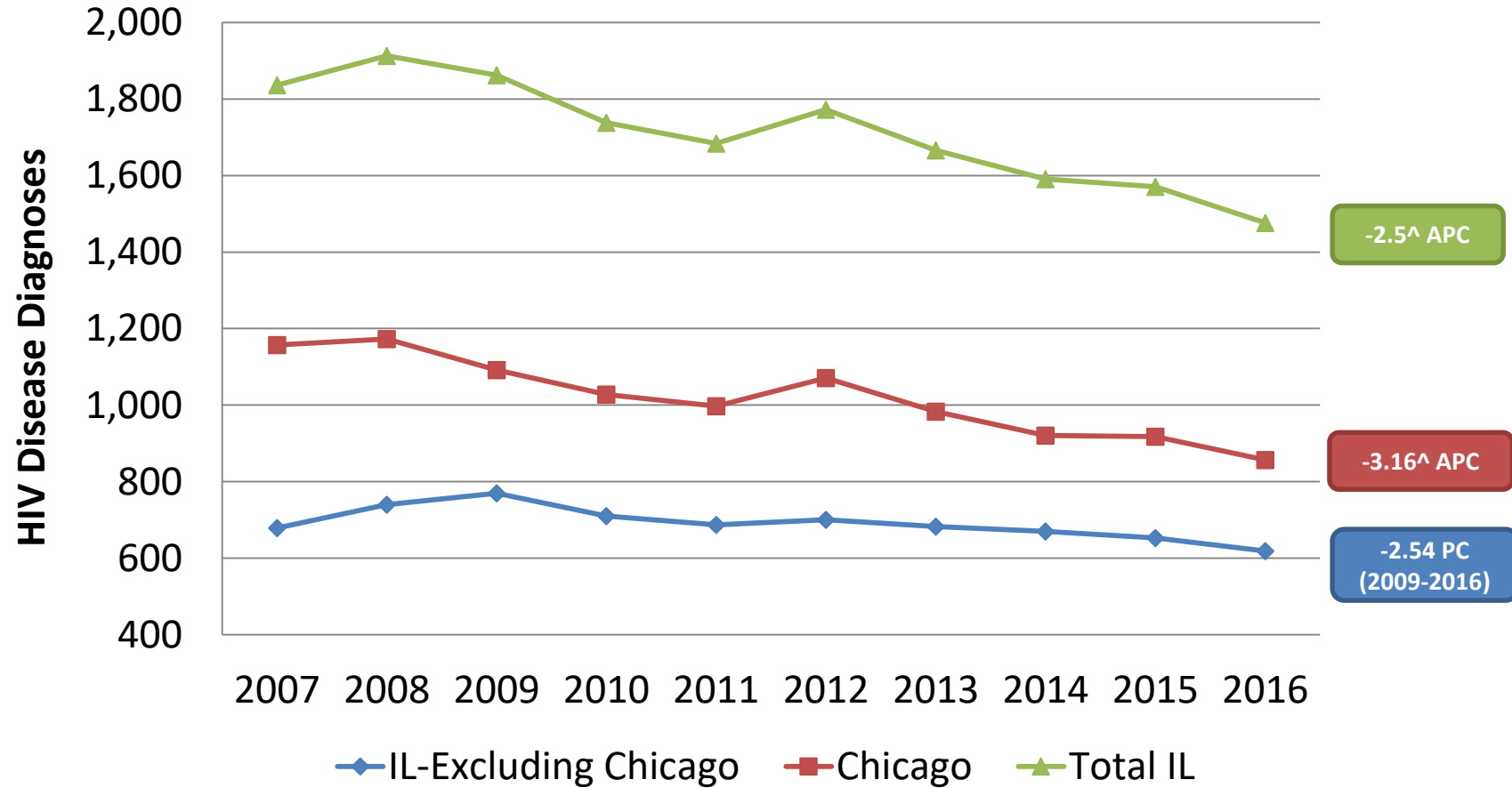
2014:
6th
1,728
(3.9%)

Estimated Rates per 100,000 of HIV Diagnoses*	2015
1. Louisiana	29.2
2. Georgia	28.3
3. Florida	27.9
4. Maryland	26.7
5. Mississippi	20.6
6. Nevada	20.1
7. Texas	20.1
8. New York	18.6
9. South Carolina	16.9
10. North Carolina	15.9
11. New Jersey	15.8
13. California	14.5
14. Illinois	13.7
15. Delaware	13.6

2014:
15th
16.1

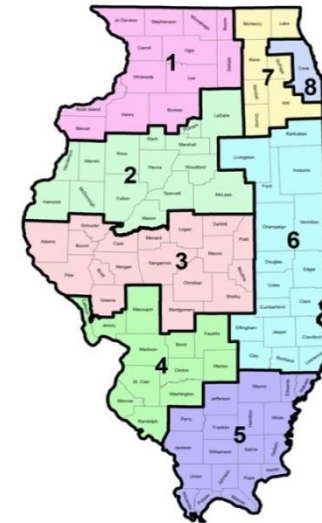
*Rate rankings exclude the District of Columbia and U.S. territories.
Source: Kaiser Family Foundation (<http://kff.org/hiv/aids/>)

HIV Diagnoses by Jurisdiction



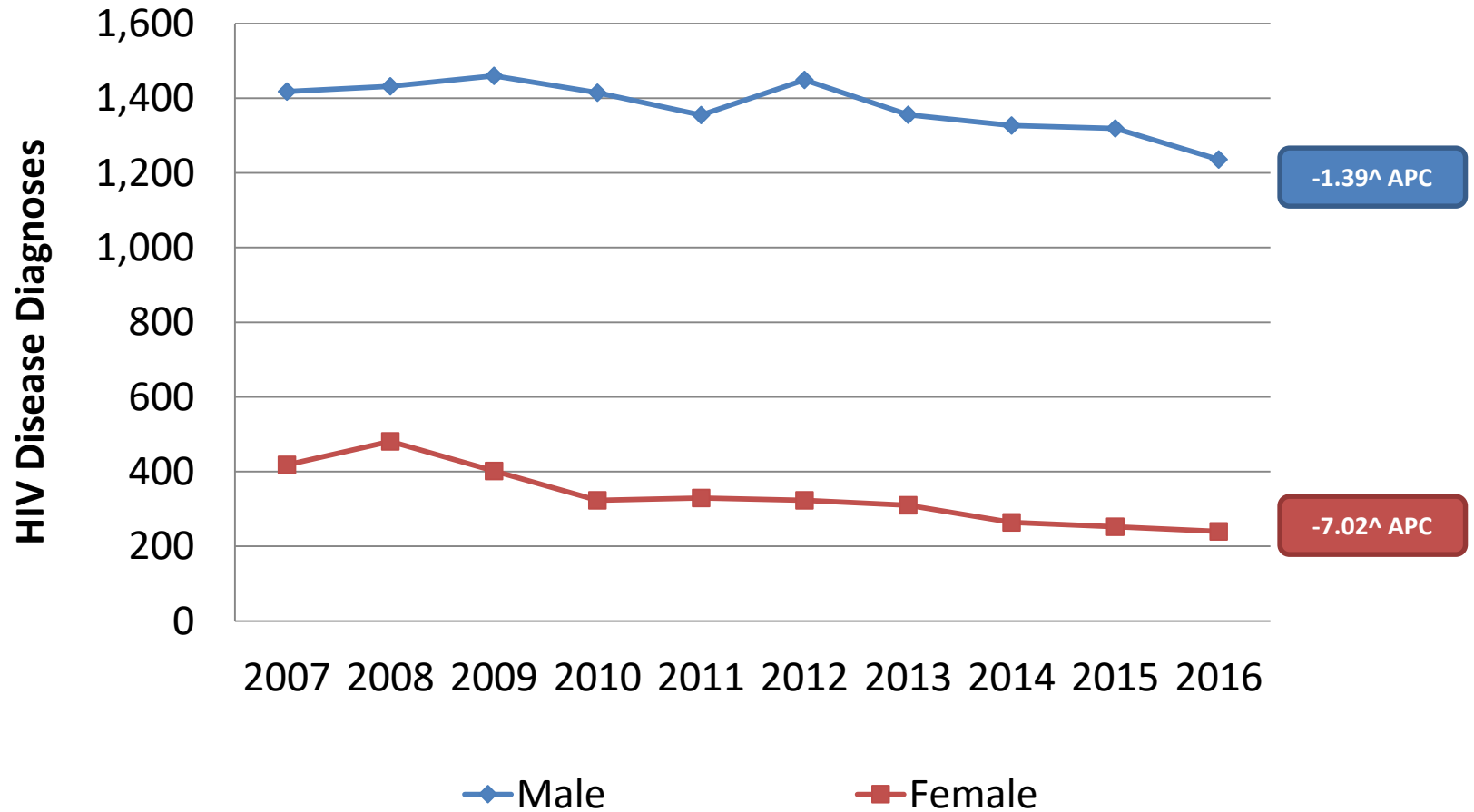
HIV Disease Diagnoses, by Illinois Community Planning Region, 2007-2016

HIV Disease Diagnoses, Illinois	2007	2008	2009	2010	2011	2012	2013	2014	2015	2016	2007-2016 APC
Region 1	55	50	54	55	63	59	47	49	51	48	-1.24
Region 2	48	38	47	43	30	30	35	41	37	30	-3.49
Region 3	42	40	35	27	31	39	42	34	31	32	-1.83
Region 4	61	102	98	75	79	90	73	73	50	58	-4.34
Region 5	28	18	19	12	23	19	21	16	17	12	-4.78
Region 6	42	49	44	50	52	40	42	47	35	28	-21.83 (2014-2016)
Region 7	170	153	185	180	155	168	163	176	161	166	-0.26
Region 8	233	290	285	265	252	254	257	229	266	227	-1.28
Chicago	1,157	1,173	1,092	1,028	997	1,071	983	921	918	857	-3.16^
Statewide	1,836	1,913	1,862	1,738	1,684	1,772	1,666	1,591	1,571	1,476	-2.50^

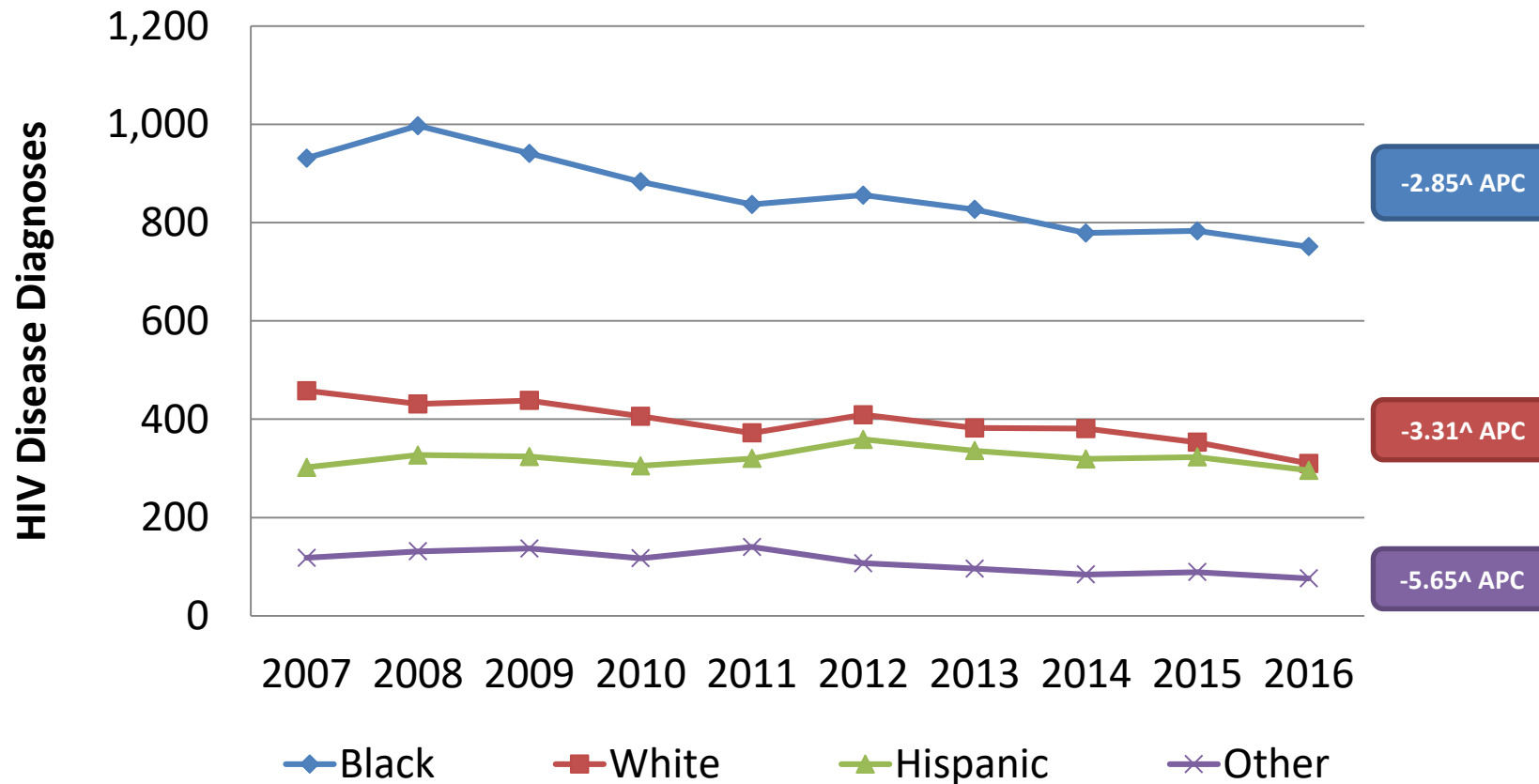


Source: Illinois Department of Public Health, HIV Surveillance Unit. Data as of December 2017.

HIV Diagnoses in Illinois Chicago by Sex at Birth



HIV Diagnoses in Illinois by Race/Ethnicity



Rate of Diagnoses of HIV Infection by Race/Ethnicity, 2016

Race/Ethnicity	No.	Rate
NH-Black	264	26.9
NH-White	178	2.5
Hispanic	144	10.7
Other	31	4.5

In 2016, the rate of new HIV infection in African Americans in **Illinois** **Excluding Chicago...**

...was over **2** times that of Hispanics...

... and nearly **11** times that of whites, based on population size.

Race/Ethnicity	No.	Rate
NH-Black	487	58.7
NH-White	132	15.0
Hispanic	182	23.0
Other	45	20.8

In 2016, the rate of new HIV infection in African Americans in **Chicago...**

...was over **2** times that of Hispanics...

...and nearly **4** times that of whites, based on population size.

Diagnoses and Rate of HIV Infection by Sex and Race/Ethnicity, 2016

Illinois Excluding Chicago	Males (N=530)		Females (N=89)		
	Race/Ethnicity	No.	Rate	No.	Rate
	NH-Black	217	45.1	47	9.4
	NH-White	154	4.4	24	0.7
	Hispanic	106	16.0	8	1.2
	Other	26	7.7	5	1.4

The estimated rate of new HIV infections for African American men in **Illinois Excluding Chicago**...
...was **more than ten** times that of white men and **more than double** that of Hispanic men.

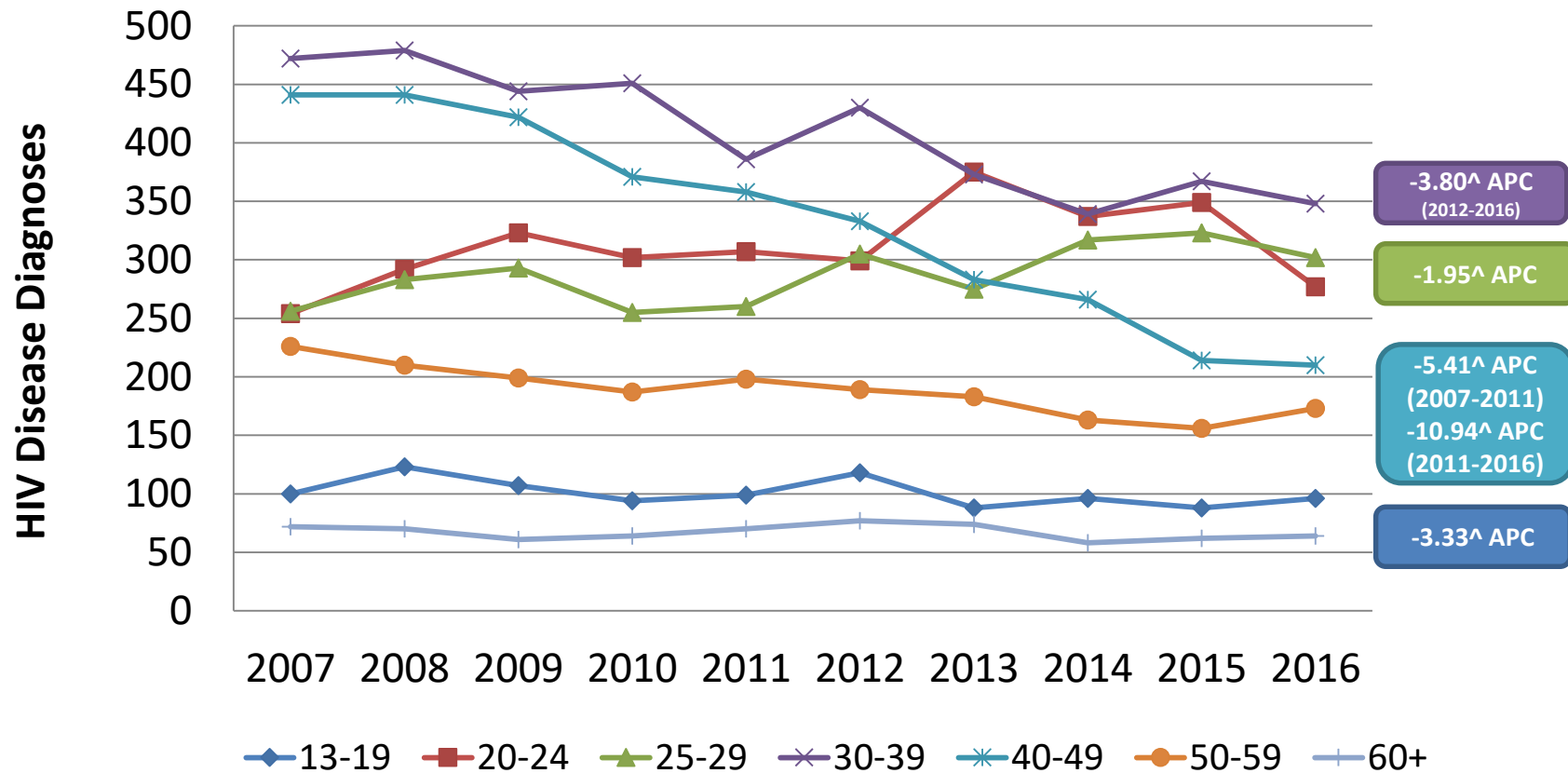
The estimated rate of new HIV infections for African American women was **more than 8** times that of Hispanic women and **14** times that of white women.

Chicago	Males (N=706)		Females (N=151)		
	Race/Ethnicity	No.	Rate	No.	Rate
	NH-Black	375	92.0	112	26.5
	NH-White	126	29.2	6	1.3
	Hispanic	163	42.0	19	4.7
	Other	37	34.9	8	7.3

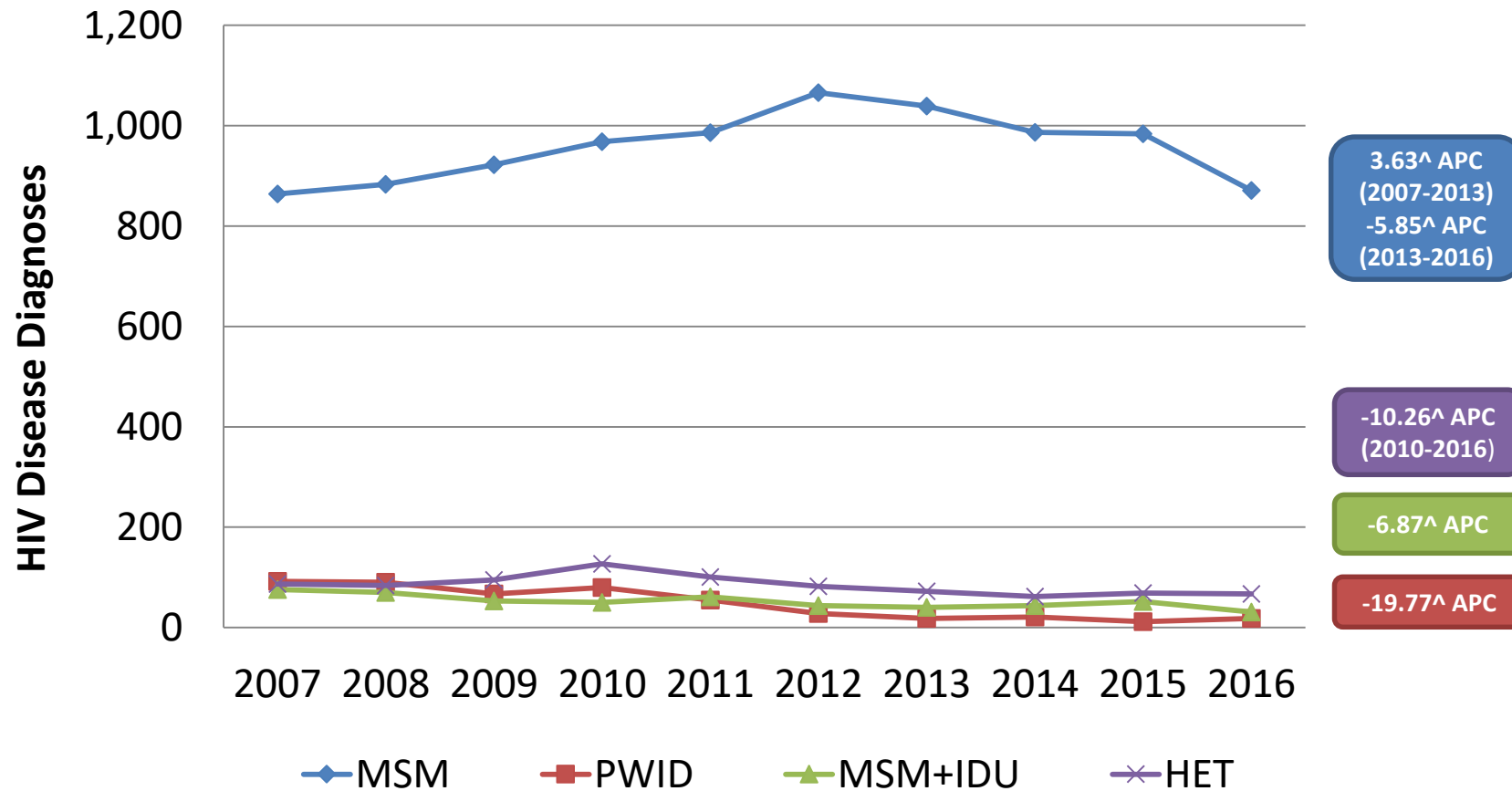
The estimated rate of new HIV infections for African American men in **Chicago**...
...was **more than double** that of white and Hispanic men.

The estimated rate of new HIV infections for African American women was **more than 5** times that of Hispanic women and **nearly 20** times that of white women.

HIV Diagnoses in Illinois by Age at Diagnosis



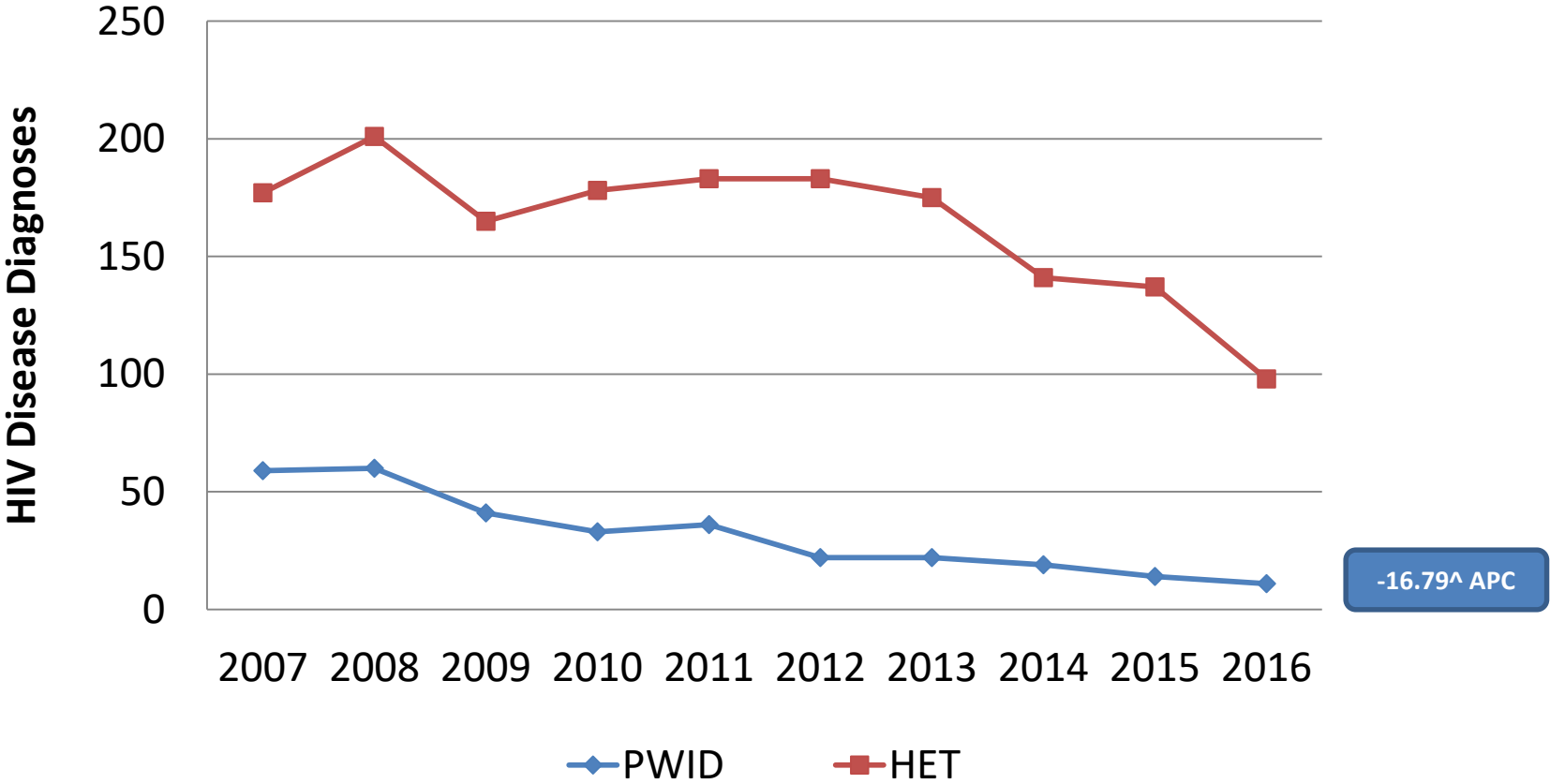
HIV Diagnoses in Illinois Among Males by Transmission Category



Excludes cases with missing risk.

Source: Illinois Department of Public Health, HIV/AIDS Surveillance Unit. Data as of December 2017.

HIV Diagnoses in Illinois Among Females by Transmission Category

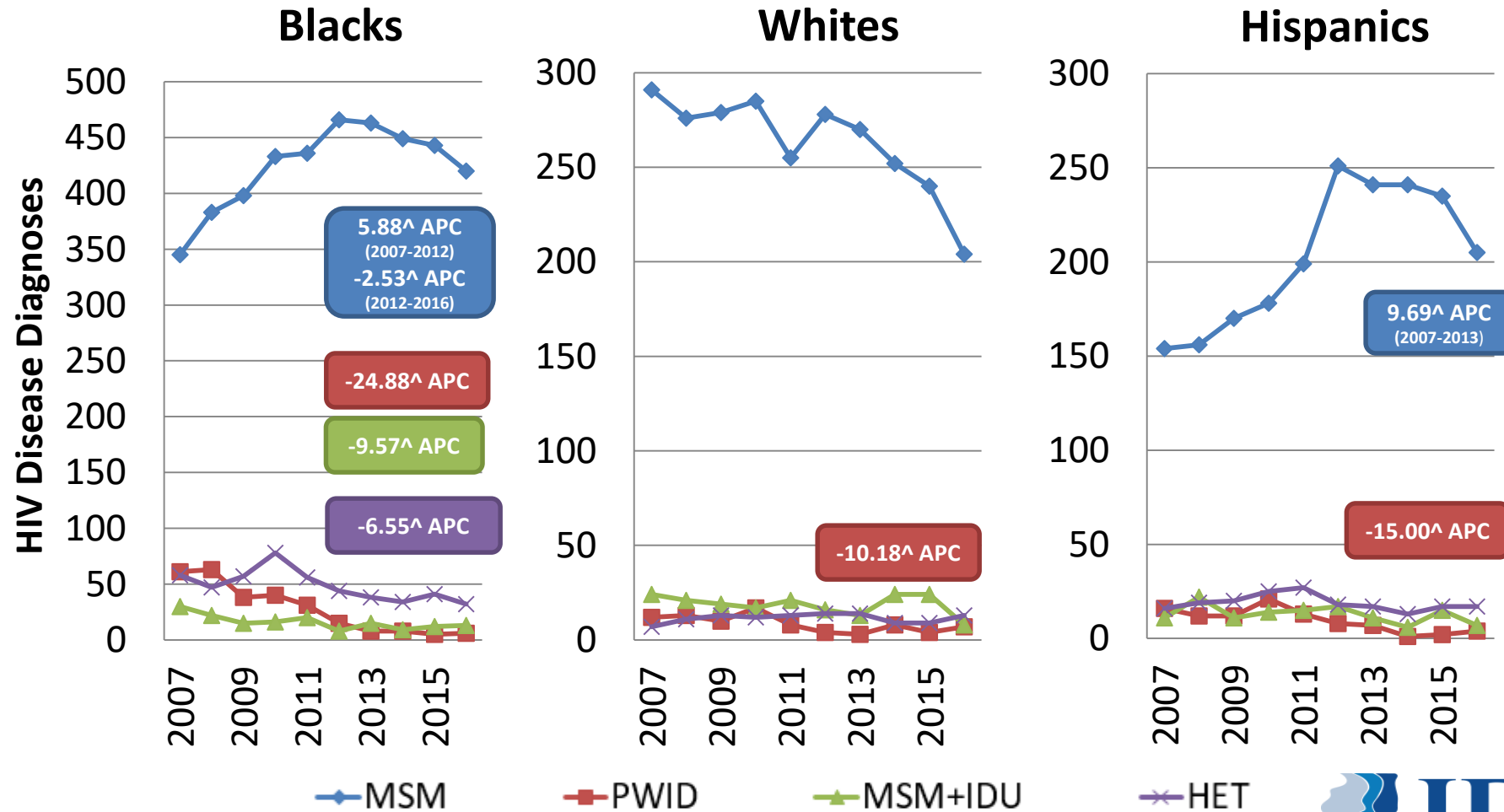


Excludes cases with missing risk.

Source: Illinois Department of Public Health, HIV/AIDS Surveillance Unit. Data as of December 2017.



HIV Diagnoses in Illinois Among Males by Race and Transmission Category

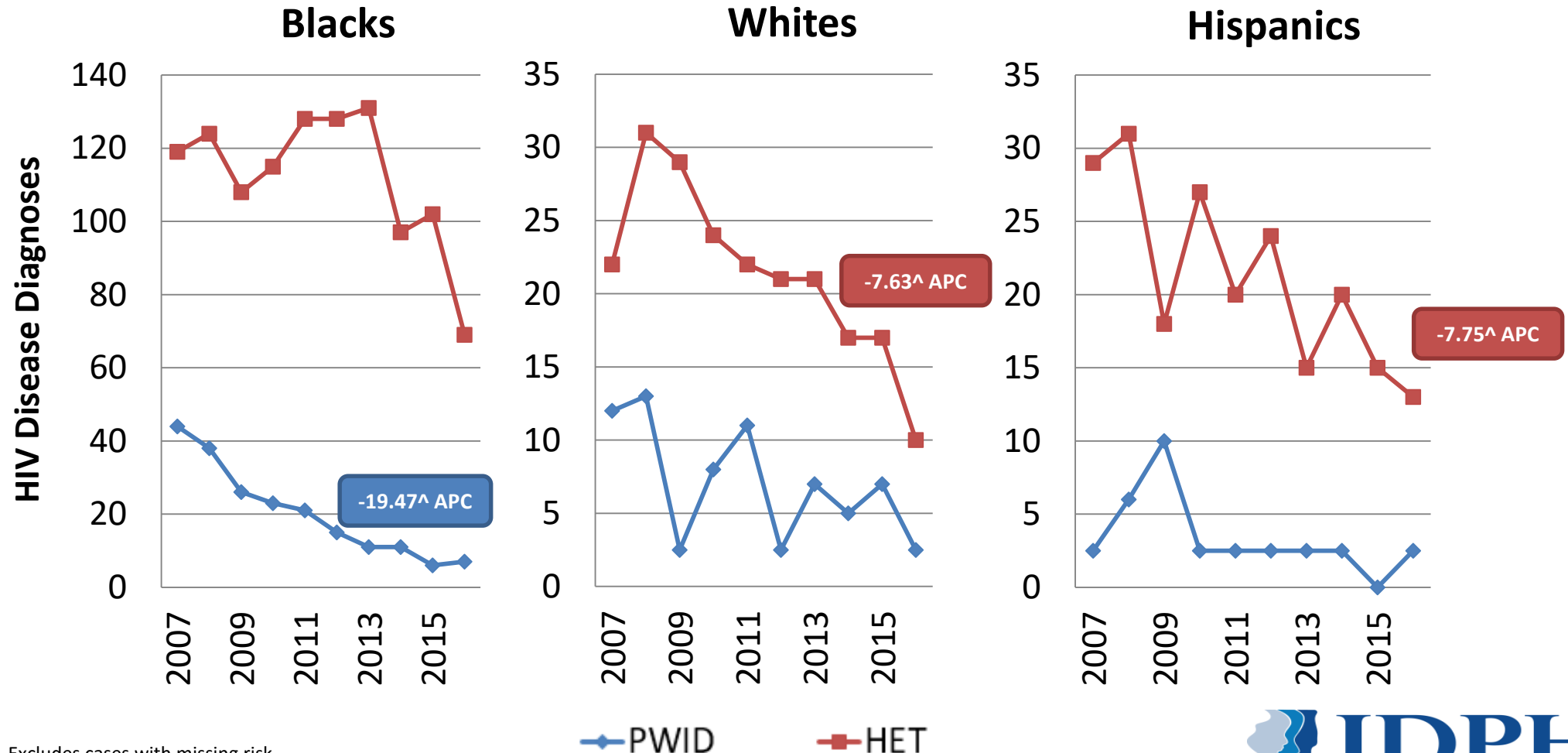


Excludes cases with missing risk.

Source: Illinois Department of Public Health, HIV/AIDS Surveillance Unit. Data as of December 2017.



HIV Diagnoses in Illinois Among Females by Race and Transmission Category

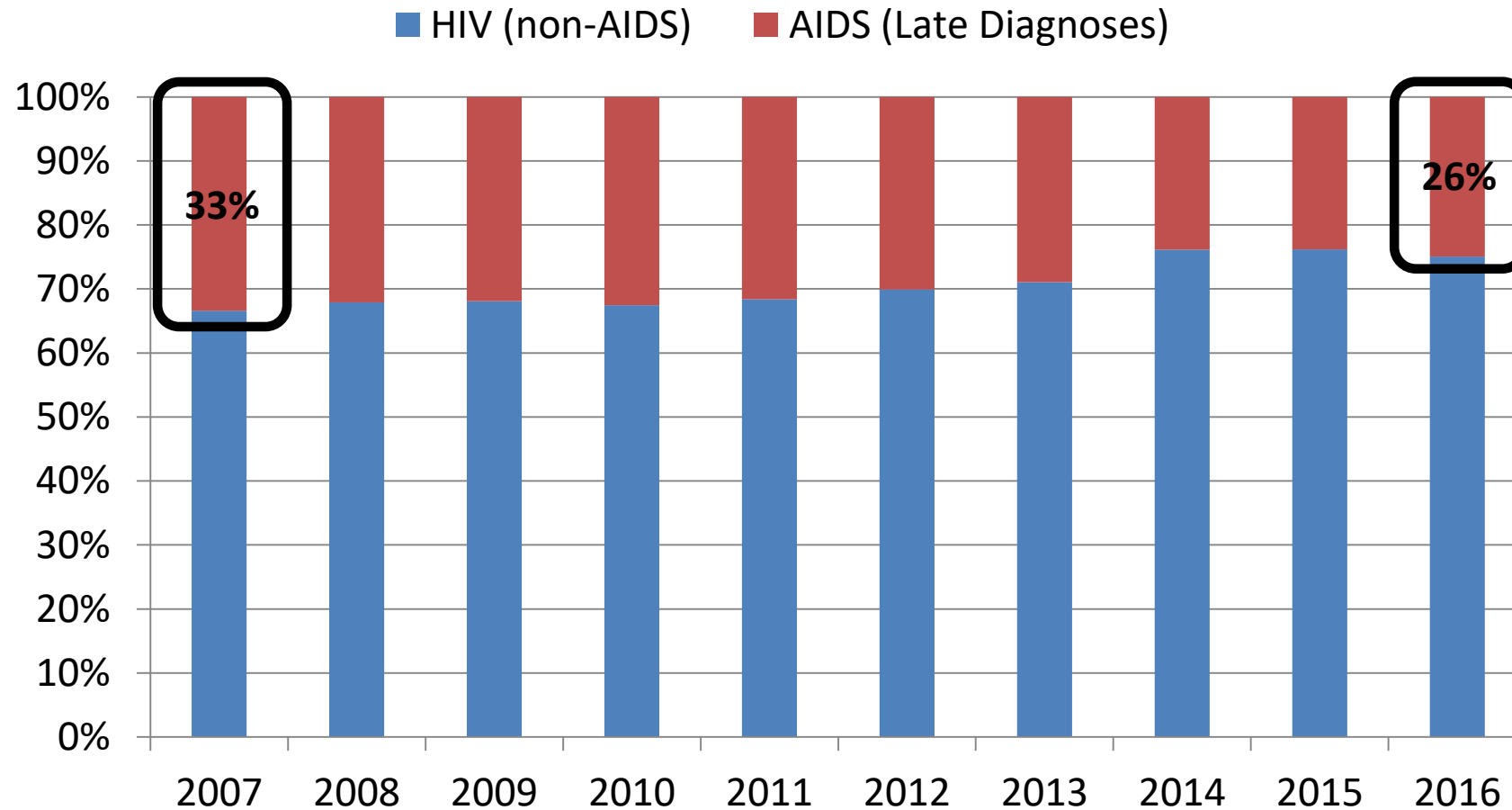


Excludes cases with missing risk.

Values in cells with <5 cases have been replaced with "2.5".

Source: Illinois Department of Public Health, HIV/AIDS Surveillance Unit. Data as of December 2017.

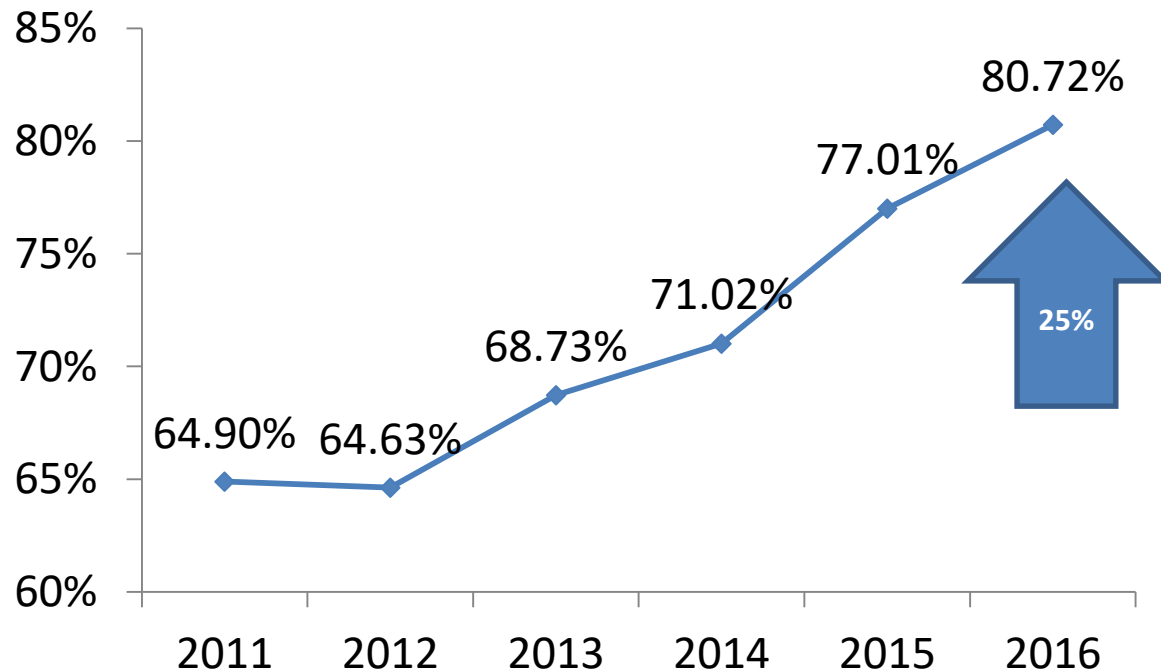
Diagnostic Status of New HIV Diagnoses in Illinois by Year of Diagnosis



HIV Care Continuum



IL HIV Care Continuum – Linkage to Care within 1 Month of Diagnosis, 2011-2016



Diagnosis Year	Incidence
2011	1,661
2012	1,739
2013	1,644
2014	1,563
2015	1,553
2016	1,452

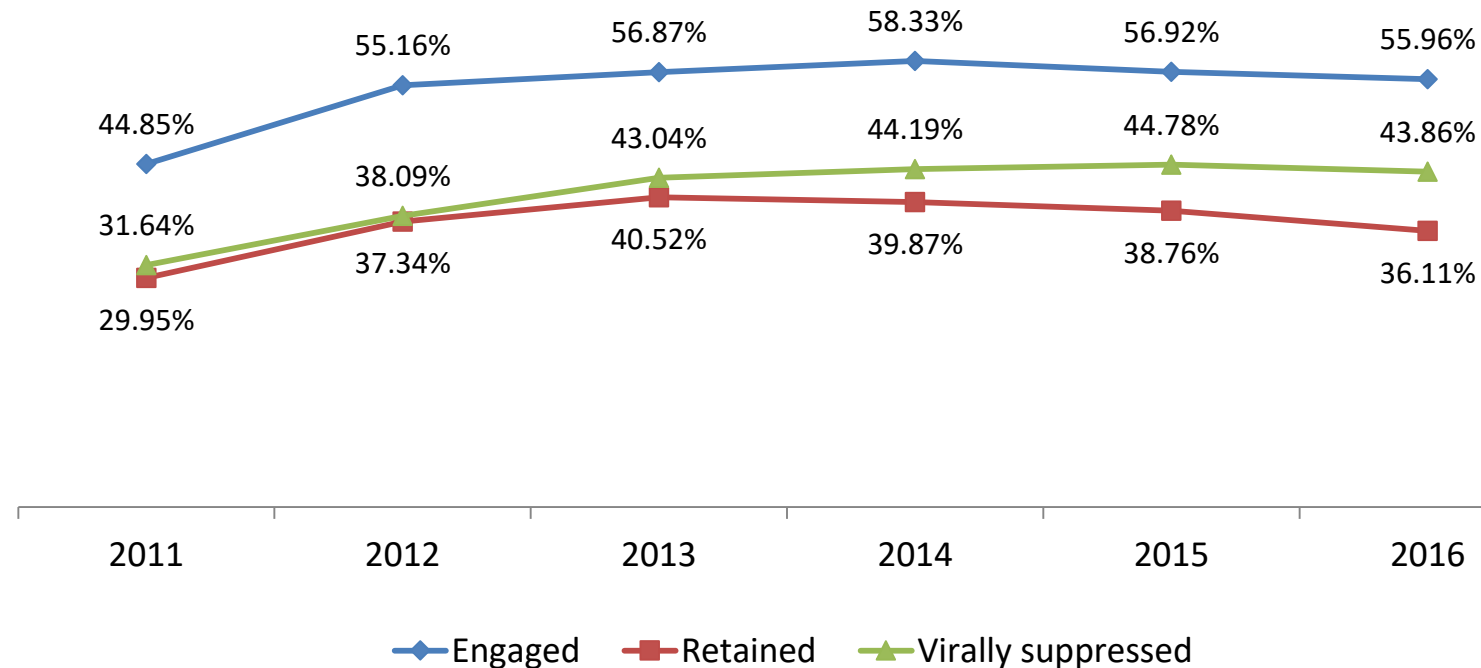
*Estimates based on cases diagnosed in 2016 who had 1 or more CD4 or VL test result \leq 1 months of diagnosis.
Source: Illinois Department of Public Health, HIV/AIDS Surveillance Unit. Data as of 7/6/2017.

IL HIV Care Continuum – Linkage to Care within 1 Month of Diagnosis, 2016

Total		Sex		Current Age		Race/Ethnicity		Risk	
PLWHA	80.72	Male	81.72	13-24	74.86	Asian	94.44	MSM	83.82
		Female	75.43	25-24	82.9	Black	78.08	IDU	71.43
				35-44	81.37	Hispanic	82.88	MSM+IDU	79.31
				45-54	83.16	White	87.5	Hetero	80.38
				55-64	84.26				
				65+	80.77				

*Estimates based on cases diagnosed in 2016 who had 1 or more CD4 or VL test result \leq 1 months of diagnosis.
Source: Illinois Department of Public Health, HIV/AIDS Surveillance Unit. Data as of 7/6/2017.

Illinois HIV Care Continuum Trends, 2011-2016



Estimates are based on Illinois HIV/AIDS surveillance data (eHARS) reported through 7/6/2017 and include all persons who meet the following criteria: diagnosed through 2015 and living as of 12/31/2016; 13 years or older; residing in Illinois at the time of diagnosis.

Engaged in care: At least 1 CD4 or viral load (VL) lab in 2016

Retained in care: 2 or more CD4 or VL test results at least 3 months apart during a 12 month period in 2016

Viral Suppression: VL \leq 200 copies/mL at most recent lab draw in 2016

Source: Illinois Department of Public Health. Data as of 7/6/2017.



Questions??

For questions regarding the information contained in this document or for more information, contact:

Cheryl Ward, MS
HIV Surveillance Program Administrator
Office: 312-814-4846
Email: cheryl.ward@illinois.gov

Fangchao Ma, MD, MPH
HIV Surveillance Epidemiologist
Office: 312-814-4846
Email: fangchao.ma@illinois.gov



Additional data including the *Monthly HIV Surveillance Update* can be found on the new IDPH website found here: www.dph.illinois.gov.

When referencing data included in this presentation, use the following citation: *Illinois Department of Public Health, HIV/AIDS Surveillance Unit, December 2017.*